

**ritter**  
QUALITY SINCE 1905



**Kitchen  
Appliances**

**MADE IN  
GERMANY**



ritter. Makes  
more out of food.





Good food deserves good preparation and appreciation, because only then can fresh ingredients be enjoyed to the fullest. The best coffee beans can only develop their aromas if they are brewed perfectly. The best steak is only a pleasure if it is cooked to perfection. The best ham only tastes good when it is finely sliced. Powerful, German precision in preparation turns food into joy. It doesn't have to be more, it doesn't have to be complicated, it just has to be perfectly prepared. Precise deli slicers and kitchen appliances with timeless aesthetics make you the sovereign master of enjoyment in the place that is most important to you: your home. And our customer service ensures that the precision of your ritter appliance is maintained even after many years.

**ritter. Makes more out of food.**

It doesn't have to be more,  
it doesn't have to be  
complicated, it just has to  
be perfectly prepared.

### **Mastering preparation**

Whether blending, pureeing or finely chopping: ritter enables you to prepare food to perfection and makes you the master of flavour.

### **Enjoy fresh**

Fresh tastes better and processing fresh food is more sustainable. Since 1905, ritter household appliances have been ensuring that only what is consumed is prepared, combining delightful freshness with sustainability.

### **German precision**

German precision is at the heart of every ritter kitchen appliance: everything is carefully designed in Germany and manufactured to German standards. This ensures precise cutting, water boiling to the exact degree and accurate installation.

### **Timeless aesthetics**

Committed to the legacy of the Bauhaus style, ritter appliances have a timeless aesthetic that fits seamlessly into any kitchen - without relying on short-lived design trends, leaving room for your individual style.



# Deli slicers

**ritter. Makes more out of food.** The semi-professional slicers from ritterwerk represent the pinnacle of precision and quality. Developed for the home kitchen as well as for the discerning hobby chef, these slicers are the epitome of perfection - the perfect combination of form and function for which ritterwerk is renowned.

Ideal for culinary enthusiasts, the high quality deli slicers from ritterwerk set a new standard in kitchen equipment, combining ritterwerk's heritage of quality with the demands of professional appliances.





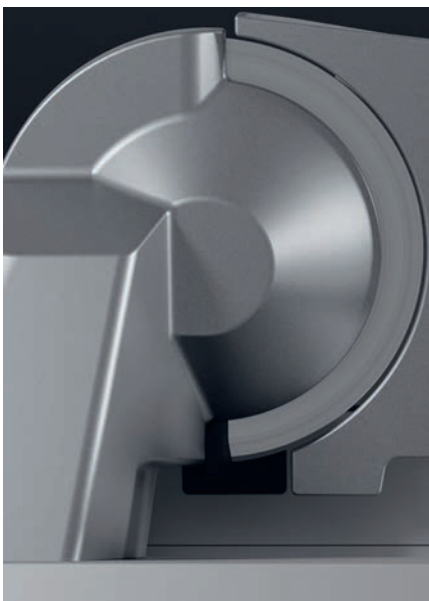


# Cut by cut to perfection.

Good food deserves good preparation and appreciation, because only then, can fresh ingredients be enjoyed to the fullest. Powerful, German precision in preparation turns food into an indulgence. **It doesn't have to be more, it doesn't have to be complicated, it just has to be perfectly prepared.** The precise lupo<sup>13</sup> deli slicer with its timeless aesthetics will make you a master of enjoyment!

Made from high quality materials the deli slicer is durable, robust and optimised for intensive use in a semi-professional environment. It is a pleasure to use, thanks to the powerful capacitor motor, which delivers enormous power and works extremely quietly. It is also equipped with a high quality, extremely sharp and smooth circular blade, that ensures evenly thin and precise slicing results - ideal for all foods that taste best when cut into wafer-thin slices. True to the Bauhaus style, this food slicer has a sleek, modern design that will enhance any sophisticated home environment.

The new deli slicer  
from ritter makes you  
a master of taste.



Unique motor head



Fine adjustment of cutting thickness

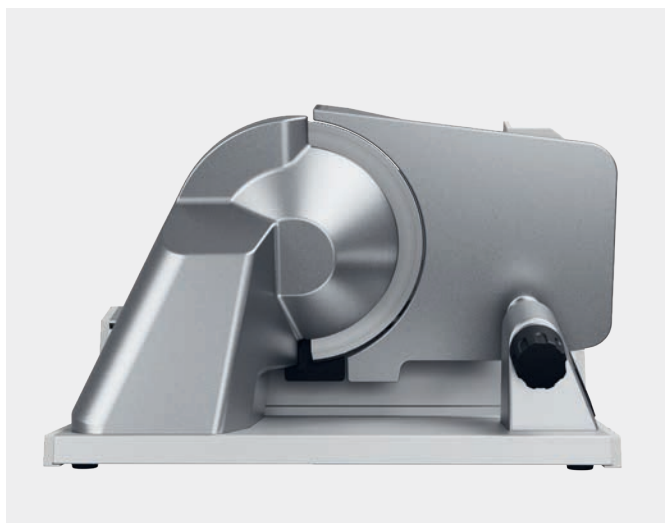


# Deli slicer lupo<sup>13</sup>

- full metal construction, inclined
- silver metallic
- unique motor head
- circular blade cover
- extra large smooth ham- and sausage circular blade, 19 cm ø
- slice thickness adjustable up to approx. 22 mm
- safety switch
- easy-going metal carriage – broad-surfaced and detachable
- carriage way approx. 25.5 cm



reddot winner 2025  
kitchen appliances design



Capacitor motor, 230 - 240 V, 170 W, duty cycle 10 min, TÜV-Rheinland/GS, protection class 1, CE

GTIN-Code	item no.	PU / pcs. per pallet	(WxHxD) in cm	Weight
40 04822 57020 4	570.020	1 / 16	32.5 x 26.5 x 41.0	6.5 kg

Subject to change without notice.



# Kitchen appliances & food slicers

selected design



Hand blender **vertico<sup>7</sup>**  
Page 10/11



Hand blender **vertico<sup>7</sup> Plus**  
Page 12/13



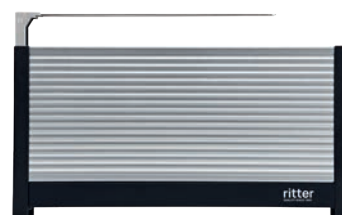
Coffee machine **cafena<sup>5</sup>**  
Page 14/15



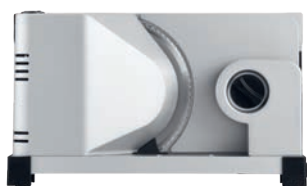
Kettle **cavita<sup>5</sup>**  
Page 16/17



Toaster **merido<sup>5</sup>**  
Page 18/19



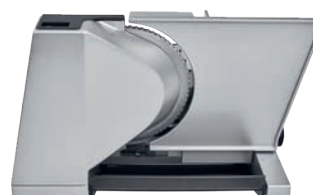
Toaster **merido<sup>3</sup>**  
Page 20/21



Electrical food slicer  
**elexa<sup>7</sup>**  
Page 22/23



Electrical food slicer  
**elexa<sup>5</sup>**  
Page 24/25



Electrical food slicer  
**amido<sup>3</sup>**  
Page 26/27



Hand-operated  
food slicer **piatto<sup>5</sup>**  
Page 28/29

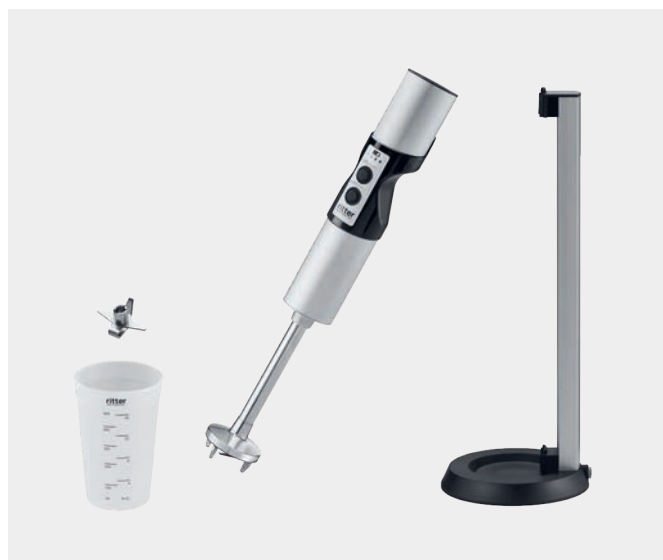
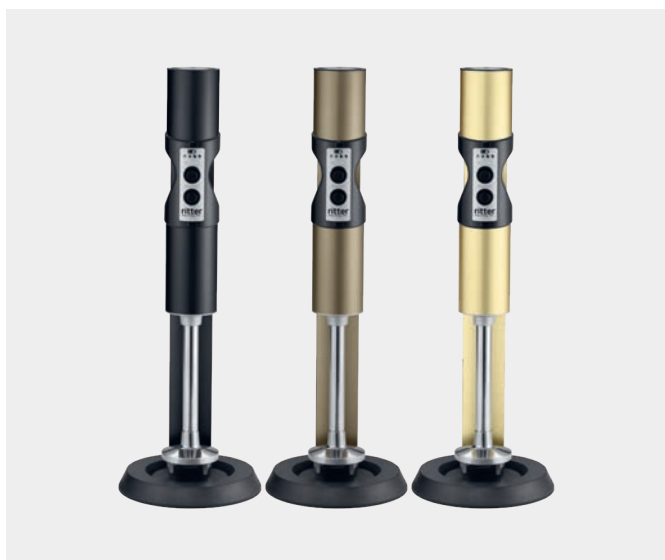




# Cordless hand blender vertico<sup>7</sup>

- cordless, battery-operated hand blender
- full metal construction
- LED battery level indicator
- three speed settings
- two-finger switch-on safety system
- automatic safety shut-off in case of overloading or overheating
- universal cutter made of stainless steel: used to blend most foods
- blending cup made of plastic

– further colours: black, gold, light gold, light brown, dark brown



plug-in power supply unit for charging station: input voltage 100 – 240 V, lithium-ion-battery: 7.2 V, 2.1 Ah, TÜV-Rheinland/GS, CE

GTIN-Code	item no.	PU / pcs. per pallet	colour	Hand blender incl. charging station:	
				<u>(WxHxD) in cm</u>	<u>Weight</u>
40 04822 62811 0	628.011	2 / 56	silver	15.0 x 44.0 x 15.5	1.7 kg
40 04822 62862 2	628.062	2 / 56	black		
40 04822 62872 1	628.072	2 / 56	gold		
40 04822 62877 6	628.077	2 / 56	light gold		
40 04822 62882 0	628.082	2 / 56	light brown		
40 04822 62887 5	628.087	2 / 56	dark brown		

Hand blender:	
<u>(WxHxD) in cm</u>	<u>Weight</u>
6.0 x 42.0 x 7.0	1.0 kg

Subject to change without notice.





# Cordless hand blender vertico<sup>7</sup> Plus

- cordless, battery-operated hand blender
- full metal construction
- LED battery level indicator
- three speed settings
- two-finger switch-on safety system
- automatic safety shut-off in case of overloading or overheating
- four attachments made of stainless steel:
  - universal cutter: used to blend most foods
  - cutting blade: suited for the cutting of meat and fibrous fruits and vegetables
  - whipping disk: used to whip creamy or fluffy foods
  - stirring disk: suited to stir foods with a thick, creamy consistency
- blending cup made of stainless steel, blending cup made of plastic
- further colours: black, gold, light gold, light brown, dark brown



plug-in power supply unit for charging station: input voltage 100 – 240 V, lithium-ion-battery: 7.2 V, 2.1 Ah, TÜV-Rheinland/GS, CE

GTIN-Code	item no.	PU / pcs. per pallet	colour	Hand blender incl. charging station:	
40 04822 62810 3	628.010	2 / 56	silver	<u>(WxHxD) in cm</u>	<u>Weight</u>
40 04822 62863 9	628.063	2 / 56	black	15.0 x 44.0 x 15.5	1.7 kg
40 04822 62873 8	628.073	2 / 56	gold	Hand blender:	
40 04822 62878 3	628.078	2 / 56	light gold	<u>(WxHxD) in cm</u>	<u>Weight</u>
40 04822 62883 7	628.083	2 / 56	light brown	6.0 x 42.0 x 7.0	1.0 kg
40 04822 62888 2	628.088	2 / 56	dark brown		

Subject to change without notice.





# Coffee machine cafena<sup>5</sup>

- coffee machine for 8 cups à 125 ml
- filter size 4
- housing made of high-quality plastic
- thermal jug with shatter-proof stainless steel vacuum cylinder
- insulated thermal jug can also be used as a serving jug
- rotational and removable filter holder with drip stop and overfill protection
- energy-saving eco brewing process: boiler is located right underneath the water tank, which leads to reduced temperature losses
- automatic switch-off after the brewing process
- 0-watt standby mode
- automatic calcification stop function: device switches off automatically in the event of calcification
- illuminated eco switch
- five rubber feet to prevent slipping



220 – 240 V, 650 – 800 W, VDE/GS, protection class 1, CE

GTIN-Code	item no.	PU / pcs. per pallet	colour	(WxHxD) in cm	Weight
40 04822 64000 6	640.000	2 / 36	black	17.5 x 43.5 x 22.0	3.0 kg
40 04822 64001 3	640.001	2 / 36	white		
40 04822 64002 0	640.002	2 / 36	red		

Subject to change without notice.





# Kettle cavita<sup>5</sup>

- cordless kettle with 360° rotating base
- heat-resistant acrylic housing
- double-sided water level indicator
- safety lid with lock mechanism
- removable lime-scale filter
- covered heating element with stainless steel protector plate
- cord storage in the base with two cord exits
- four rubber feet to prevent slipping
- 70°, 80°, 95° and 100°C temperature settings with LED indicator
- overheating protection with automatic switch-off when the set temperature is reached
- boil-dry protection with automatic switch-off when kettle is empty
- automatic switch-off when kettle is removed from base
- 1.1 l capacity



reddot design award  
winner 2013



220 – 240 V, 2.400 – 2.800 W, VDE/GS, protection class 1, CE

GTIN-Code	item no.	PU / pcs. per pallet	colour	(WxHxD) in cm	Weight
40 04822 63515 6	635.015	2 / 64	black	22.0 x 24.5 x 15.0	1.3 kg
40 04822 63516 3	635.016	2 / 64	white		
40 04822 63517 0	635.017	2 / 64	red		

Subject to change without notice.





ritter  
QUALITY SINCE 1905

# Toaster merido<sup>5</sup>

- elongated slot toaster for 2 slices of toast
- thermal insulated housing with glass panels
- integrated bread and roll rack
- memory function of the toasting degree
- toasting degree with LED indication
- automatic toast food centering
- defrosting function
- reheating function
- automatic switch-off function when toast is jammed
- separate stop button to interrupt toasting
- crumb tray



220 – 240 V, 850 – 1.000 W, TÜV-Rheinland/GS, protection class 1, CE

GTIN-Code	item no.	PU / pcs. per pallet	colour	(WxHxD) in cm	Weight
40 04822 63044 1	630.044	2 / 72	black	38.5 x 20.0 x 9.0	3.0 kg
40 04822 63045 8	630.045	2 / 72	white		
40 04822 63046 5	630.046	2 / 72	red		

Subject to change without notice.



**ritter**  
QUALITY SINCE 1905



# Toaster merido<sup>3</sup>

- elongated slot toaster for 2 slices of toast
- thermal insulated housing with aluminum panels
- integrated bread and roll rack
- memory function of the toasting degree
- toasting degree with LED indication
- automatic toast food centering
- defrosting function
- reheating function
- automatic switch-off function when toast is jammed
- separate stop button to interrupt toasting
- crumb tray



220 – 240 V, 850 – 1.000 W, TÜV-Rheinland/GS, protection class 1, CE

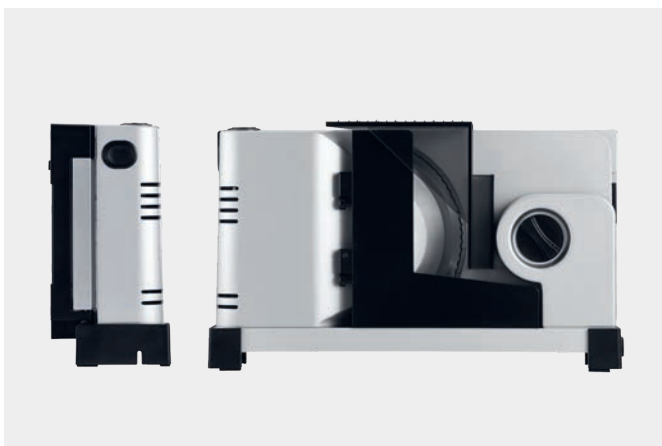
GTIN-Code	item no.	PU / pcs. per pallet	(WxHxD) in cm	Weight
40 04822 63073 1	630.073	2 / 72	38.5 x 20.0 x 9.0	2.7 kg

Subject to change without notice.



# Electrical food slicer elexa<sup>7</sup>

- full metal construction
- silver metallic
- foldable supply table
- serrated circular blade, 17 cm Ø
- slice thickness adjustable up to approx. 14 mm
- two-finger switch-on safety system
- switch for intermittent and continuous operation
- divisible carriage for space-saving storage when slicer is folded
- carriage way approx. 20 cm
- food tray
- cable compartment



230 V, 65 W, duty cycle 5 min, VDE/GS, protection class 2, CE

GTIN-Code	item no.	PU / pcs. per pallet
40 04822 52114 5	521.014	2 / 72

(WxHxD) in cm
24.0 (folded 10.0) x 20.0 x 34.0

Weight
3.6 kg

Subject to change without notice.





# Electrical food slicer elexa<sup>5</sup>

- metal construction
- foldable supply table
- serrated circular blade, 17 cm Ø
- slice thickness adjustable up to approx. 14 mm
- safety switch for intermittent and continuous operation
- divisible carriage for space-saving storage when slicer is folded
- carriage way approx. 20 cm
- food tray
- cable compartment



230 V, 65 W, duty cycle 5 min, VDE/GS, protection class 2, CE

GTIN-Code	item no.	PU / pcs. per pallet	colour	(WxHxD) in cm	Weight
40 04822 52125 1	521.025	2 / 72	silver metallic	24.0 (folded 10.0) x 20.0 x 34.0	3.4 kg
40 04822 52136 7	521.036	2 / 72	black		

Subject to change without notice.



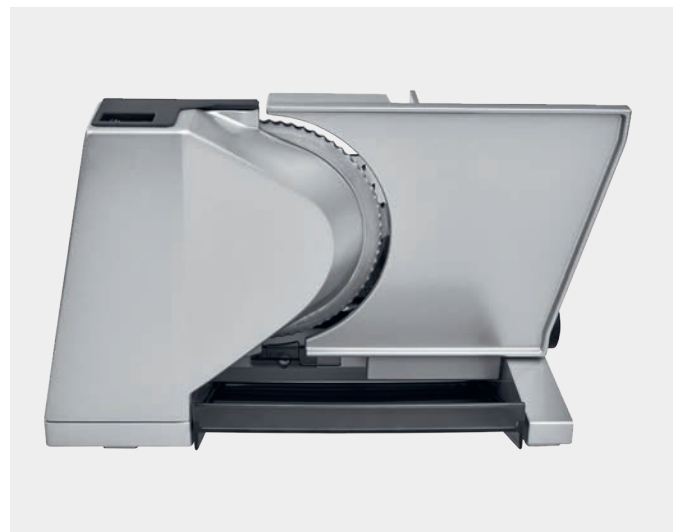
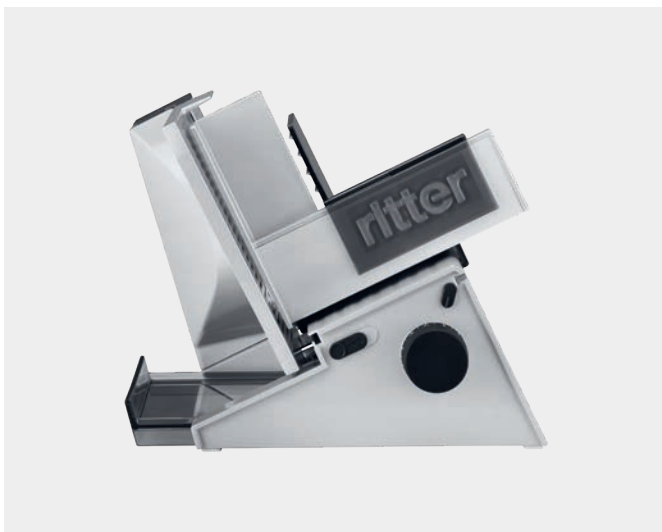


# Electrical food slicer amido<sup>3</sup>

- full metal construction, inclined
- silver metallic
- serrated circular blade, 17 cm ø
- circular blade cover
- slice thickness adjustable up to approx. 23 mm
- safety switch for intermittent and continuous operation
- easy-going metal carriage – broad-surfaced and detachable
- carriage way approx. 24 cm
- food tray
- cable compartment



reddot design award  
winner 2008



230 V, 65 W, duty cycle 5 min, VDE/GS, protection class 2, CE

GTIN-Code	item no.	PU / pcs. per pallet	(WxHxD) in cm	Weight
40 04822 55821 9	558.021	1 / 36	30.0 x 24.5 x 39.0	4.4 kg

Subject to change without notice.



# Hand-operated food slicer piatto<sup>5</sup>

- manually operated
- food sliced from left to right
- full metal construction
- silver metallic
- serrated circular blade, 17 cm ø
- slice thickness adjustable up to approx. 20 mm
- detachable carriage made of stainless steel
- carriage way approx. 20 cm
- smooth metal crank with a beech wood handle
- stainless steel bracket to guide the food slices
- FSC® certified bamboo board collects the food slices and, at the same time, serves as a cutting board
- four high-quality suction feet for a non-slip and solid footing



TÜV-Rheinland/GS

GTIN-Code	item no.	PU / pcs. per pallet	(WxHxD) in cm	Weight
40 04822 10722 6	107.022	2 / 32	34.5 x 25.5 x 37.0	4.3 kg incl. bamboo board

Subject to change without notice.



# Electrical **food slicers**

premium

---

comfort

---

economy

---

# Hand-operated **appliances**

---



secura<sup>9</sup>  
Page 32/33



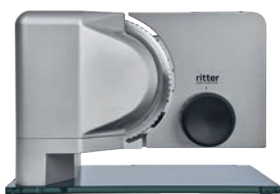
secura<sup>8</sup>  
Page 34/35



sinus<sup>5</sup>  
Page 36/37



inteso<sup>4</sup>  
Page 38/39



sinus<sup>2</sup>  
Page 40/41



arcus<sup>3</sup>  
Page 42/43



sinus<sup>1</sup>  
Page 44/45



fino<sup>1</sup>  
Page 46/47



sigma<sup>1</sup>  
Page 48/49



orbis<sup>5/1</sup>  
Page 50/53



podio<sup>3</sup>  
Page 54/55



peeler  
Page 56/57





# Electrical food slicer secura<sup>9</sup>

- full metal construction, inclined
- silver metallic
- serrated circular blade, 17 cm Ø
- circular blade cover
- slice thickness adjustable up to approx. 23 mm
- safety switch for intermittent and continuous operation
- vario electronic rpm adjustment
- easy-going, broad - surfaced detachable carriage with metal tray
- carriage way approx. 24 cm
- food tray
- cable compartment



DC motor, 230 V, 130 W, duty cycle 10 min, VDE/GS, protection class 1, CE

GTIN-Code	item no.	PU / pcs. per pallet	(WxHxD) in cm	Weight
40 04822 55375 7	553.075	2 / 36	30.0 x 24.5 x 37.0	5.3 kg

Subject to change without notice.



# Electrical food slicer secura<sup>8</sup>

- full metal construction, inclined
- silver metallic
- serrated circular blade, 17 cm ø
- circular blade cover
- slice thickness adjustable up to approx. 23 mm
- safety switch for intermittent and continuous operation
- vario electronic rpm adjustment
- easy-going, broad-surfaced detachable carriage with metal tray
- carriage way approx. 24 cm
- FSC® certified bamboo board collects the food slices and, at the same time, serves as a cutting board
- cable compartment



DC motor, 230 V, 130 W, duty cycle 10 min, protection class 1, CE

GTIN-Code	item no.	PU / pcs. per pallet	(WxHxD) in cm	Weight
40 04822 55362 7	553.062	2 / 48	29.0 x 24.5 x 37.0	5 kg incl. bamboo board

Subject to change without notice.





# Electrical food slicer sinus<sup>5</sup>

- full metal construction, suspended
- silver metallic
- bottom panel made of shatterproof glass
- serrated circular blade, 17 cm Ø
- circular blade cover
- slice thickness adjustable up to approx. 23 mm
- safety switch for intermittent and continuous operation
- broad-surfaced, detachable carriage
- carriage way approx. 24 cm
- cable compartment



reddot award 2015  
winner



230 V, 65 W, duty cycle 5 min, VDE/GS, protection class 2, CE

GTIN-Code	item no.	PU / pcs. per pallet
40 04822 55720 5	557.020	1 / 30

(WxHxD) in cm	Weight
27.0 x 26.0 x 38.0	5.9 kg

Subject to change without notice.





# Electrical food slicer inteso<sup>4</sup>

- full metal construction, inclined
- silver metallic
- serrated circular blade, 17 cm ø
- circular blade cover
- slice thickness adjustable up to approx. 23 mm
- safety switch for intermittent and continuous operation
- easy-going, broad-surfaced detachable carriage with metal tray
- carriage way approx. 24 cm
- food tray
- cable compartment



230 V, 65 W, duty cycle 5 min, VDE/GS, protection class 2, CE

GTIN-Code	item no.	PU / pcs. per pallet
40 04822 55476 1	554.076	2 / 48

(WxHxD) in cm	Weight
25.5 x 25.0 x 37.5	3.7 kg

Subject to change without notice.



# Electrical food slicer sinus<sup>2</sup>

- metal construction, suspended
- bottom panel made of shatterproof glass
- serrated circular blade, 17 cm ø
- slice thickness adjustable up to approx. 20 mm
- safety switch for intermittent and continuous operation
- detachable carriage
- carriage way approx. 18 cm
- cable compartment

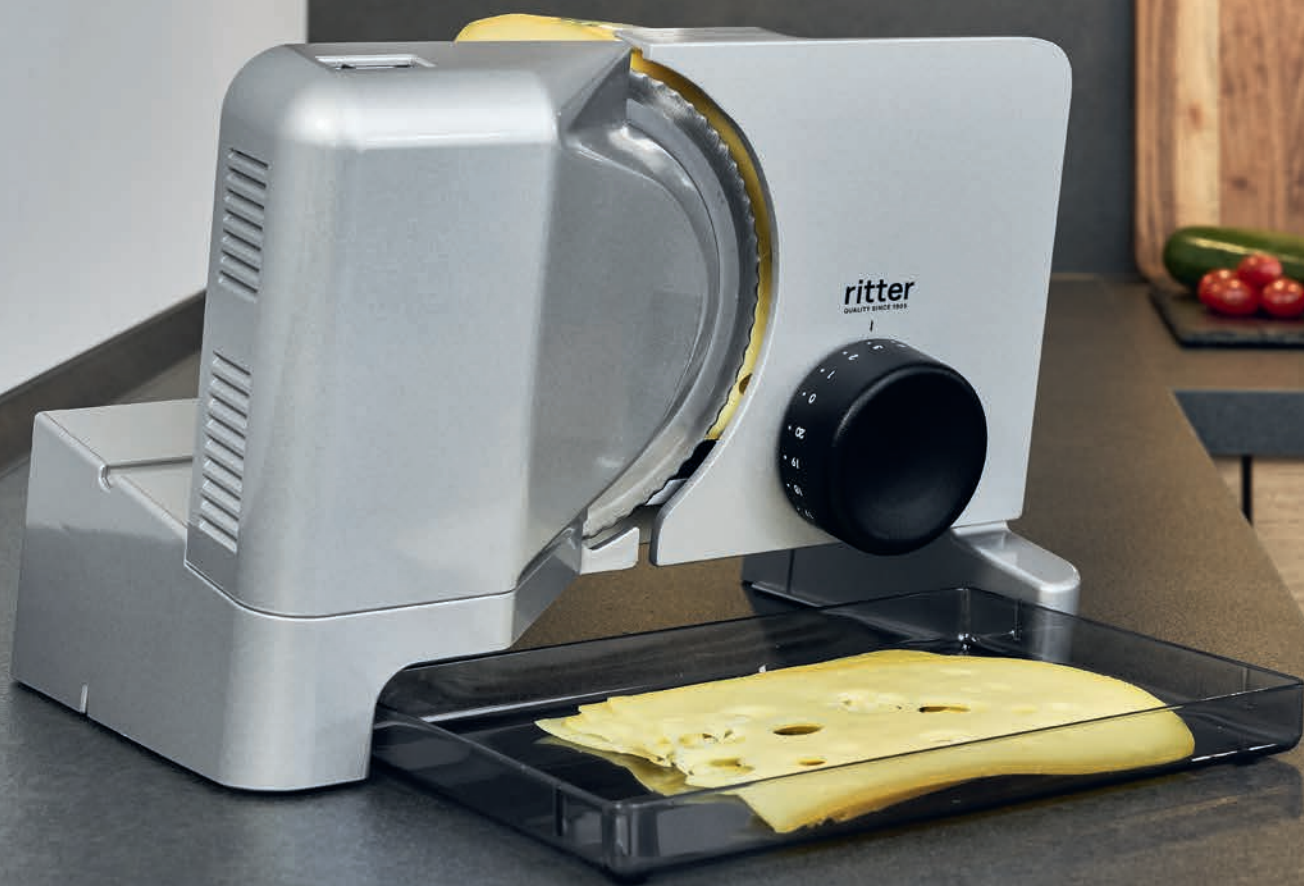


230 V, 65 W, duty cycle 5 min, VDE/GS, protection class 2, CE

GTIN-Code	item no.	PU / pcs. per pallet	colour	(WxHxD) in cm	Weight
40 04822 52850 2	528.050	2 / 36	silver metallic	20.5 x 24.0 x 34.5	4.5 kg
40 04822 52851 9	528.051	2 / 36	black		

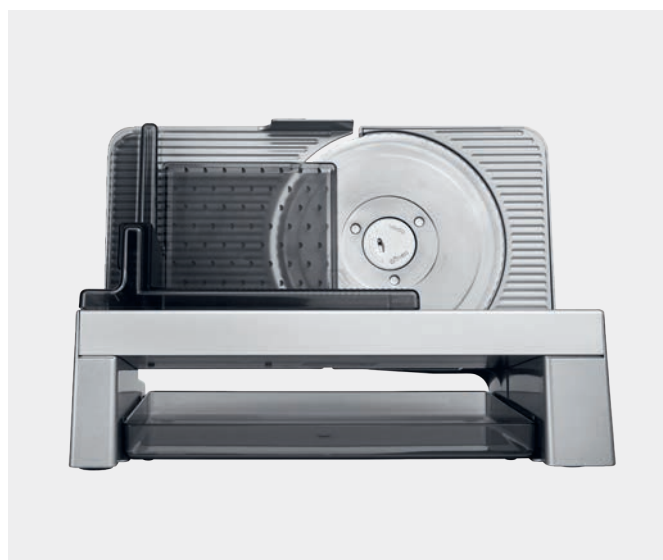
Subject to change without notice.





# Electrical food slicer arcus<sup>3</sup>

- metal construction, inclined
- serrated circular blade, 17 cm Ø
- slice thickness adjustable up to approx. 20 mm
- safety switch for intermittent and continuous operation
- detachable carriage
- carriage way approx. 18 cm
- food tray
- cable compartment



230 V, 65 W, duty cycle 5 min, VDE/GS, protection class 2, CE

GTIN-Code	item no.	PU / pcs. per pallet	colour	(WxHxD) in cm	Weight
40 04822 51523 6	515.023	4 / 48	silver metallic	22.5 x 23.0 x 33.5	3.0 kg
40 04822 51546 5	515.046	4 / 48	black		

Subject to change without notice.





# Electrical food slicer sinus<sup>1</sup>

- metal construction, suspended
- silver metallic
- bottom panel made of shatterproof glass
- serrated circular blade, 17 cm Ø
- slice thickness adjustable up to approx. 20 mm
- safety switch for intermittent and continuous operation
- detachable carriage
- carriage way approx. 18 cm



230 V, 65 W, duty cycle 5 min, VDE/GS, protection class, CE

GTIN-Code	item no.	PU / pcs. per pallet	(WxHxD) in cm	Weight
40 04822 52320 0	523.020	2 / 40	22.0 x 26.5 x 34.5	4.3 kg

Subject to change without notice.



# Electrical food slicer fino<sup>1</sup>

- metal construction
- silver metallic
- serrated circular blade, 17 cm ø
- slice thickness adjustable up to approx. 20 mm
- safety switch for intermittent and continuous operation
- detachable carriage
- carriage way approx. 18 cm
- food tray
- cable compartment



230-240 V, 65 W, duty cycle 5 min, VDE/GS, protection class 2, CE

GTIN-Code	item no.	PU / pcs. per pallet	(WxHxD) in cm	Weight
40 04822 51833 6	518.033	4 / 48	20.5 x 23.0 x 33.0	2.6 kg

Subject to change without notice.





# Electrical food slicer sigma<sup>1</sup>

- metal construction
- grey
- serrated circular blade, 17 cm ø
- slice thickness adjustable up to approx. 20 mm
- safety switch for intermittent and continuous operation
- detachable carriage
- carriage way approx. 18 cm
- cable compartment



230 V, 65 W, duty cycle 5 min, VDE/GS, protection class 2, CE

GTIN-Code	item no.	PU / pcs. per pallet	(WxHxD) in cm	Weight
40 04822 51850 3	518.050	4 / 48	20.5 x 23.0 x 33.0	2.5 kg

Subject to change without notice.





# Electrical food slicer orbis<sup>5</sup>

- high-quality plastic
- white
- foldable supply table
- serrated circular blade, 17 cm Ø
- slice thickness adjustable up to approx. 14 mm
- safety switch for intermittent and continuous operation
- vario electronic rpm adjustment
- detachable and divisible carriage for space-saving storage when slicer is folded
- carriage way approx. 18 cm
- cable compartment



230-240 V, 65 W, duty cycle 5 min, VDE/GS, protection class 2, CE

GTIN-Code	item no.	PU / pcs. per pallet	(WxHxD) in cm	Weight
40 04822 50125 3	501.025	8 / 120	26.0 (folded 10.5) x 21.0 x 34.0	1.7 kg

Subject to change without notice.



# Electrical food slicer orbis<sup>1</sup>

- high-quality plastic
- white
- foldable supply table
- serrated circular blade, 17 cm Ø
- slice thickness adjustable up to approx. 14 mm
- safety switch for intermittent and continuous operation
- detachable and divisible carriage for space-saving storage when slicer is folded
- carriage way approx. 18 cm
- cable compartment



230-240 V, 65 W, duty cycle 5 min, VDE/GS, protection class 2, CE

GTIN-Code	item no.	PU / pcs. per pallet	(WxHxD) in cm	Weight
40 04822 50109 3	501.009	8 / 120	26.0 (folded 10.5) x 21.0 x 34.0	1.7 kg

Subject to change without notice.



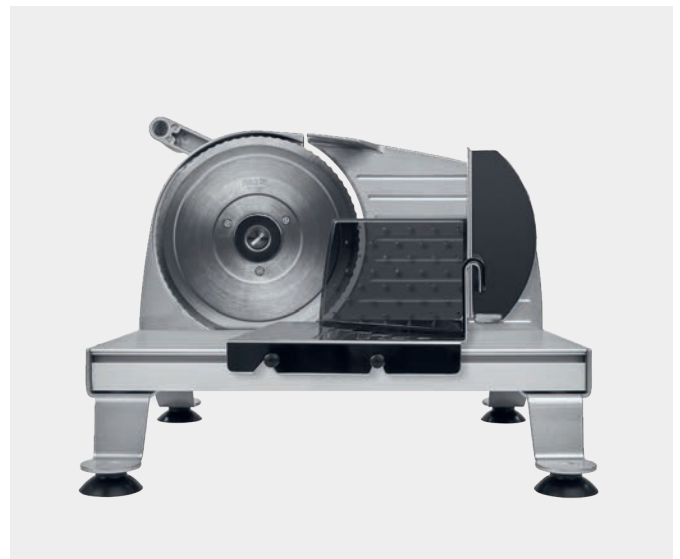


# Hand-operated food slicer podio<sup>3</sup>

- manually operated
- food sliced from left to right
- full metal construction
- silver metallic
- serrated circular blade, 17 cm ø
- slice thickness adjustable up to approx. 20 mm
- detachable carriage made of stainless steel
- carriage way approx. 20 cm
- smooth metal crank with high quality plastic handle
- stainless steel bracket to guide food slices
- feet made of steel
- four high-quality suction feet for a non-slip and solid footing



reddot winner 2021



TÜV-Rheinland/GS

GTIN-Code	item no.	PU / pcs. per pallet	(WxHxD) in cm	Weight
40 04822 10720 2	107.020	2 / 32	36.5 x 25.0 x 33.5	3.3 kg

Subject to change without notice.







# ritter peeler

- optimal for both, right and left-handed operation
- special stainless steel mobile blade
- handle made of plastic with eye remover (for finish cleaning of potatoes)
- colour: white



GTIN-Code	item no.	PU / pcs. per pallet	(WxH) in cm	Weight
40 04822 20325 6	203.025	40	6.5 x 11.0	11 g

Subject to change without notice.

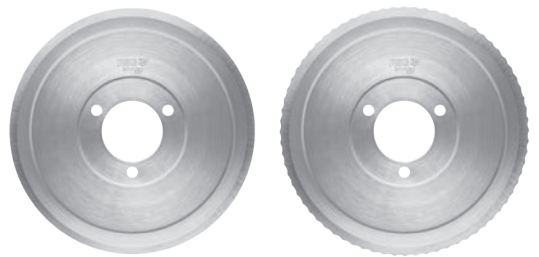
# Accessories food slicer

## Circular blades for the food slicers

The slicing outcome is greatly dependent on the circular blade's polish, shape, and quality. As a result, ritter offers a variety of circular blades featuring different slicing capabilities for precise slicing. The serrated circular blade is ideal for all types of slicing. The smooth ham and sausage circular blade, in particular, slices soft foods into evenly thin slices.

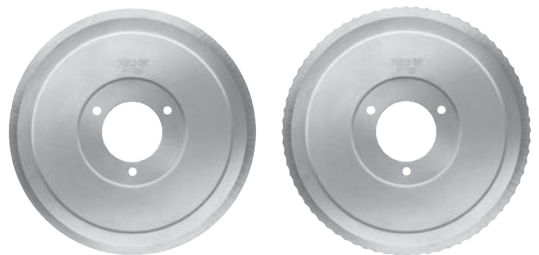
### Stainless steel circular blade

The standard circular blade is suited for every-day use. The stainless steel circular blade is available serrated or as a smooth blade for hams and sausages.



### Stainless steel circular blade with an electropolished surface

The stainless steel circular blade is electrolytically polished by a special procedure, resulting in an extremely smooth surface and even slicing edge. As a result, the circular blade may be cleaned more easily and the slicing results become even more accurate. Furthermore, the round blade takes on an elegant, high polish look. The electropolished circular blade is available as serrated and as a smooth ham- and sausage circular blade.



### Original ritter maintenance grease

The original ritter maintenance grease is suitable for all ritter food slicers. We recommend to occasionally regrease the gear wheels on the circular blade and the guiding of the slicing carriage.



Subject to change without notice.

For accessories and spare parts please see: [www.ritterwerk.com](http://www.ritterwerk.com)

# Accessories hand blender

## Hand blender attachments

Various foods can be chopped, blended, whipped, and mixed with the hand blender. ritter offers a variety of attachments, based upon the desired outcome and food consistency.

### Universal cutter

This multi-purpose blade is suitable to chop and blend most foods.



### Cutting blade

The cutting blade is especially suited for the cutting of meat and fibrous fruits and vegetables such as asparagus, spinach or pineapple.



### Whipping disk

The whipping disk is used to whip creamy or fluffy foods such as cream or egg whites.



### Stirring disk

The stirring disk is suited to stir foods with a thick, creamy consistency such as mayonnaise, sauces or mashes.



### Blending cup made of plastic

Thanks to its tall, narrow shape, the blending cup is perfect for food processing with the cordless hand blenders by ritter. The filling capacity is 500 ml.



### Blending cup made of stainless steel

The stainless steel blending cup is also well-shaped and therefore optimally suited for use with a ritter hand blender. Thanks to the stamped scale, you have a perfect view of when the maximum fill level of 500 ml has been reached.



Subject to change without notice.

For accessories and spare parts please see: [www.ritterwerk.com](http://www.ritterwerk.com)





1905



1932



1968



2008



2010

## The history

**ritterwerk** was founded in 1905 by Franz Ritter and is a traditional Bavarian company based in Gröbenzell near Munich. As a German manufacturer of kitchen appliances, we have devoted ourselves to the principles and teachings of the Bauhaus of the 1920s. Therefore, we manufacture products whose form always follows their functions.

**The corner stone of today's success story** was laid by means of knife cleaning machines, which at times, when stainless steel had not yet been invented, were quite popular. With this appliance, one was able to free knives and other cutlery that were not yet stainless quite easily of rust, with just a simple crank motion. Until the introduction of stainless steel, the knife-cleaning machine was sold more than 1.000.000 times; but also the other kitchen appliances by ritter that were created in years to follow enjoyed great popularity and some still do so today.

**The first bread slicer** by ritter was developed almost 30 years after the knife-cleaning machine was first introduced to the market. As with the knife-cleaning machine, the hand crank was also used here, with great success. In 1968, the first electric food slicer followed, and true to the Bauhaus principles of the 1920s, was also designed for the kitchen drawer.

**The tradition of food slicing** with ritter products ranges from the bread slicing machine with the long-serving hand crank and the electric drive, to the suspended, inclined food slicer and the one that is integrated into the kitchen drawer. The product range has been continuously expanded over the years; now we offer toasters, coffee machines, kettles, hand blenders and a wide range of built-in systems. The technical refinements as well as the ingenuity regarding the design have been developed and adapted to today's expertise. Our roots and our endeavour to produce sustainable and durable kitchen appliances that are "made in Germany" and facilitate everyday life are still an important part of our corporate culture. Our selected design is a special range of small kitchen appliances that are outstandingly designed – and reflect our vision perfectly.

**An important step** was taken at the end of 2020 when the Schüller family took over ritterwerk by way of a management buyout following the departure of Werner Braun – thus, the company remains in private hands, the succession has been arranged and the course for a successful future has been set as well. Michael Schüller, who has been Managing Director since 2005, commented on the change with optimism: „We hope that the new ownership structure will enable us to further consolidate ritterwerk's position as an expert in small kitchen appliances. In doing so, we are relying on our entire workforce and are pleased that they support our takeover 100 %.“ His two sons, Moritz Sebastian and Leonard Lorin Schüller, are also active in the company, leading the internationalisation and the development of new product categories.



2012



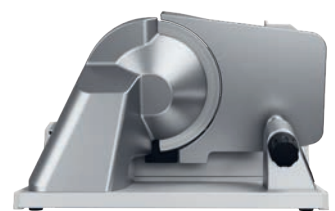
2015



2019



2020



2024