

**MADE IN
GERMANY**



Built-in food slicer BFS 72 SR-H

Modern and functional kitchen technology.

for installation in standard drawers with a cabinet width of at least 50 cm

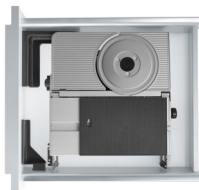
prerequisite: clear width drawer > 392 mm

Distance bottom of drawer to top of worktop min. 165 mm, max. 210 mm

The built-in food slicer BFS 72 SR-H made of full metal provides for more stability and top slicing results. The electropolished serrated circular blade slices even more precisely. The two-finger switch-on system increases safety.

Thanks to the bayonet quick-acting lock the circular blade may be taken off without tools for cleaning.

Version with high mount e.g. for handleless kitchens, reinforced worktops etc.



Features

- food sliced from right to left
- full metal construction with high mount
- serrated circular blade with electropolished surface, 17 cm Ø
- slice thickness adjustable up to approx. 14 mm
- two-finger switch-on safety system
- switch for intermittent and continuous operation
- automatic folding lock when slice thickness is set
- food tray made of stainless steel
- holding device / bracket for finger protection and left-over holder
- folding up fixture locks automatically
- VDE/GS, safety category 2, CE
- 230 V, 65 W, duty cycle 5 min.
- weight 4.3 kg

Dimensions

height: 75 mm width: 390 mm depth: 365 mm (folded)

Optional

smooth ham- and sausage circular blade

Warranty

2 years*, product made in Germany

Item No. / GTIN

546.018 / 40 04822 54618 6

Technical data are subject to change

*The 2-year manufacturer's warranty applies to all devices sold within the European Union. Your legal warranty claims according to § 437 ff. BGB (German Civil Code) remain unaffected by this regulation. You can view the warranty conditions at <https://www.ritterwerk.de/warranty>.